

WaterChef®

SMART WATER FILTRATION

INSTALLATION, USE & CARE GUIDE

COUNTERTOP Filtration System

C7000

▲ IMPORTANT

Read & Save These Instructions.

This System does not require
the services of a plumber.

QUESTIONS?

1.800.879.8909

(int'l +1.775.359.9500)

MON - FRI 8 AM - 5 PM PST

My System Serial #:

Serial Number is located under filter housing base.



System Certified by IAPMO R&T against NSF/ANSI Standard 42 for the reduction of Chloramine, Chlorine Taste and Odor, and Particulate Class I; NSF/ANSI Standard 53 for the reduction of Lead, Mercury, Cysts, VOCs, MTBE and Turbidity; NSF/ANSI Standard 401 for the reduction of the claims specified on the Performance Data Sheet; NSF/ANSI Standard 372 for Lead-Free Compliance under the US SDWA.



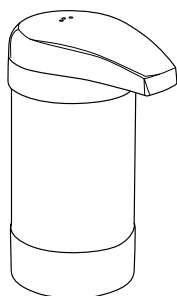
bpa**free**



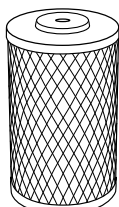
TABLE OF CONTENTS

Introduction	1
Important Use Guidelines	1
Product Specifications	2
Replacement Parts Directory	2
Setup and Installation	3
Replacing the Filter Cartridge	5
Troubleshooting	7
Warranty	8
Product Registration	9

WHAT'S IN THE BOX [MODEL: C7000]



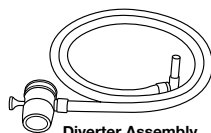
Lid and Housing Assembly



**WaterChef® CR70
Filter Cartridge**
*(ships pre-installed in
housing assembly)*



3 Piece Faucet Adapter Kit
(includes 3 washers)



Diverter Assembly

Included Literature:

- Installation, Use & Care Guide
- Performance Data Sheet
- Product Registration Card



Battery Shuttle
*(includes CR2032
Battery)*

HAVE QUESTIONS OR NEED ASSISTANCE?

WaterChef Customer Care is here to help if you ever have questions or need assistance with your WaterChef Filtration System.

Customer Care Line (U.S. & Canada): 1.800.879.8909 (toll-free)

International Customer Care Line: +1.775.359.9500

Hours of Operation: Mon. - Fri. 8 AM - 5 PM Pacific Time

Email: customercare@waterchef.com

Website: waterchef.com

INTRODUCTION

Congratulations on the purchase of your new WaterChef® Premium Filtration System!

You have taken an important step toward improving the quality of your drinking and cooking water. This System only takes a few minutes to install in your home, office, dorm room, cabin or RV.

WaterChef Premium Filtration Systems are crafted using only the finest materials and workmanship, and will serve you reliably for many years to come when operated and maintained according to the directions contained in this guide. You have made a wise investment in providing quality water for you and your loved ones. Now please take a few minutes to learn about all the features and benefits your new Filtration System has to offer!

IMPORTANT USE GUIDELINES

1. Read this manual completely before attempting to install or use this product.
2. Replacement Filter Cartridges may be purchased from a WaterChef reseller or online from waterchef.com. To order by phone, contact WaterChef Customer Care at 1.800.879.8909 (int'l +1.775.359.9500).
3. The actual capacity of your Cartridge may vary from the rated capacity. This may be due to the volume of contaminants or sediment actually present in your water supply.
For optimal performance, replace your Filter Cartridge upon the first occurrence of the following:
 - Annually
 - The flow rate diminishes
 - You notice a taste or odor recurrence
 - The 1,000 gallon rated capacity of the Filter Cartridge has been reached
 - The Intelligent Monitor™ begins flashing RED
4. Do not use water that is microbiologically unsafe or of unknown quality without adequate disinfection before or after the System. Systems certified for cyst reduction may be used on disinfected waters that may contain filterable cysts.
5. Individuals requiring specific microbiological purity should consult their physician.
6. For use on cold potable water supplies only.
7. For this System to continue to perform as tested and represented, be sure to use only genuine, certified WaterChef® CR70 Filter Cartridges.
8. Do not allow System to sit for extended lengths of time without being used (*10 days or more*). If System must be left unused for more than 10 days, drain all water from the System and remove the Filter Cartridge. Once you return, re-install Cartridge and flush for 15 min. prior to use. (*The flushed water can be used to water plants.*)
9. Installation of this product must comply with all state and local laws and regulations. Refer to your local agencies for details.
10. The contaminants or other substances removed or reduced by this System may not be in all users' water.

PRODUCT SPECIFICATIONS

WATERCHEF COUNTERTOP FILTRATION SYSTEM (Model: C7000)

Installation	Countertop
Particle Retention Size	Sub-Micron
Intelligent Monitor	LED
Rated Capacity	1,000 gallons (US) / 3,785 L
Rated Service Flow	0.75 gal/min @ 60 psi
Maximum Working Pressure	100 psig (689.5 kPa)
Minimum Working Pressure	30 psig (206.8 kPa)
Maximum Operating Temperature	100° F / 38° C
Minimum Operating Temperature	34° F / 1° C
Replacement Filter Cartridge (<i>includes CR2032 Battery</i>)	CR70
EPA Establishment Number	63018-NV-001

Protected under U.S. Patent #: D408,494



System Certified by IAPMO R&T against NSF/ANSI Standard 42 for the reduction of Chloramine, Chlorine Taste and Odor, and Particulate Class I; NSF/ANSI Standard 53 for the reduction of Lead, Mercury, Cysts, VOCs, MTBE and Turbidity; NSF/ANSI Standard 401 for the reduction of the claims specified on the Performance Data Sheet; NSF/ANSI Standard 372 for Lead-Free Compliance under the US SDWA.



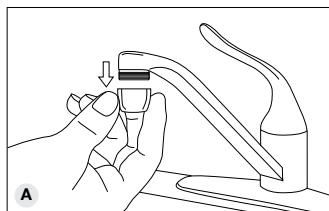
Refer to Performance Data Sheet for complete list of contaminant and substance reduction capabilities.

REPLACEMENT PARTS DIRECTORY

	ITEM	PART #	DESCRIPTION
	1	1215-55-05	Lid Assembly (White)
	1	1215-41-01	Lid Assembly (Black)
	2	4-104-0052-02	Battery Shuttle (White) (<i>includes Battery</i>)
	2	4-104-0052-01	Battery Shuttle (Black) (<i>includes Battery</i>)
	3	1215-10-09	Housing Assembly (White)
	3	1215-20-40	Housing Assembly (Black)
	4	CR70	Filter Cartridge (<i>includes Battery</i>)
	5	0581-03-02	3/8" Diverter Valve Assembly (White)
	5	0581-03-15	3/8" Diverter Valve Assembly (Black)
	6	9-904-0023	Faucet Adapter Kit (<i>3 pieces</i>)

SETUP & INSTALLATION

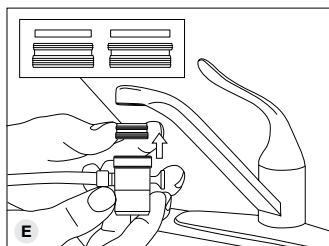
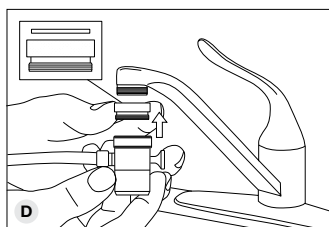
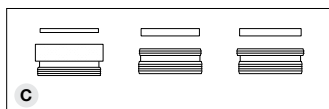
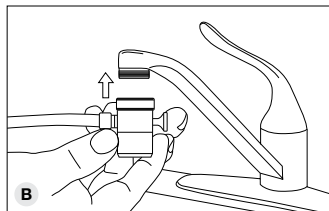
1. Open the shipping carton, remove all System parts and place them on your kitchen counter.
2. Compare them with the parts shown in this guide to be certain all items were included (see *inside front cover*).
3. Unthread and remove the aerator from the end of your kitchen faucet if it has one. (fig. A)



NOTE

This System is not recommended for installation on pull-out faucets.

4. Thread the Diverter Valve directly onto your kitchen faucet. Do not over-tighten. (fig. B)
5. If the threads to the Diverter Valve do not directly attach to your kitchen faucet, use one of the three Adapters provided. (fig. C)
6. Most kitchen faucets with external threads will directly attach to the Diverter Valve. In some instances the Diverter Valve may be smaller than your kitchen faucet. In this case use the adapter with internal threads and thread it directly to your kitchen faucet. Next, thread the Diverter Valve to the Adapter. (fig. D)
7. If your kitchen faucet has internal threads, thread one of the two Adapters with external threads directly to your kitchen faucet. Next, thread the Diverter Valve to the Adapter. (fig. E)
8. If your kitchen faucet does not have threads, measure the inside diameter of the kitchen faucet and call WaterChef Customer Care at **1.800.879.8909** (int'l +1.775.359.9500) to request an *Expandable Adapter*.
9. If your kitchen faucet does not fit any of the Adapters provided, please call WaterChef Customer Care at **1.800.879.8909** (int'l +1.775.359.9500) or check with your local hardware store.



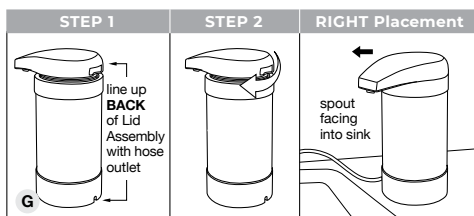
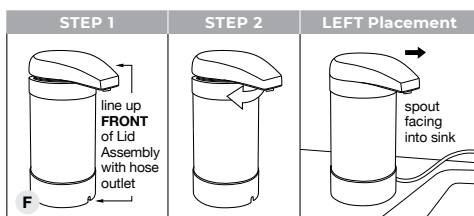
(continued on next page)

SETUP & INSTALLATION

10. Determine which side of the sink you want your System:

To position System to the LEFT side of your sink: Unthread Lid Assembly from Filter Housing, then orient the Lid Assembly to Filter Housing as shown. (fig. F, Step 1) Once positioned, thread Lid Assembly clockwise onto the Filter Housing until tightened. (fig. F, Step 2)

To position System to the RIGHT side of your sink: Unthread Lid Assembly from Filter Housing, then orient the Lid Assembly to Filter Housing as shown. (fig. G, Step 1) Once positioned, thread Lid Assembly clockwise onto the Filter Housing until tightened. (fig. G, Step 2)

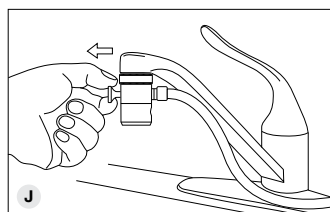
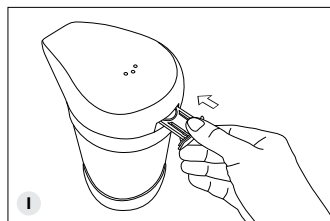
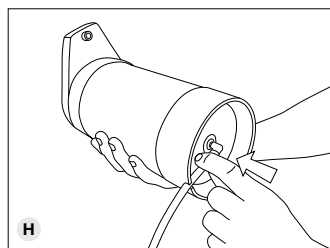


11. Press the elbow fitting on Diverter Valve Assembly into the Filter Base. (fig. H)

12. Insert Battery Shuttle (with included Battery) into Lid Assembly. (fig. I) The Intelligent Monitor™ will flash GREEN, YELLOW and RED five times. This resets the rated capacity counter to zero gallons. **Do NOT remove Battery Shuttle until it is time to replace the Filter Cartridge. Removing Battery Shuttle prematurely may result in a loss of data.**

13. With System placed on the counter and positioned so that water will flow into kitchen sink, turn the cold water faucet "ON" and pull Diverter Pin. (fig. J) Water will begin to fill the Filter Housing. Once water begins to flow from the System, the Intelligent Monitor™ will begin flashing GREEN to indicate peak operational performance. Check to see that all hose, lid and housing connections are tight and do not leak.

14. **Allow System to flush into sink for 15 minutes.** This will remove any fine, black carbon particles left over from the manufacturing process, expel trapped air and condition the Filter Cartridge for normal use. (This water may be used to water plants.)



▲ IMPORTANT

Repeat flushing procedure each time a new Cartridge is installed.

Congratulations! Your new WaterChef® Filtration System is ready!

REPLACING THE FILTER CARTRIDGE

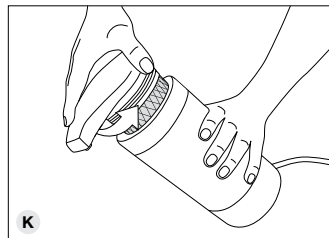
The most important part of maintaining your WaterChef Filtration System is replacing the Filter Cartridge (*and Battery*) on a regular service interval. To ensure your System continues to perform as stated in the Performance Data Sheet, the Filter Cartridge should be replaced upon the first occurrence of the following:

- Annually
- The flow rate diminishes
- You notice a taste or odor recurrence
- The 1,000 gallon rated capacity of the Filter Cartridge has been reached
- The Intelligent Monitor™ begins flashing RED

▲ IMPORTANT

Be sure to use only genuine WaterChef® CR70 Filter Cartridges with this System. Only WaterChef Filter Cartridges have been certified by IAPMO R&T to insure the performance represented in the Performance Data Sheet.

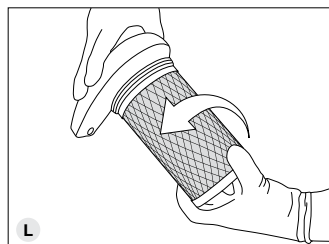
1. Remove the Lid Assembly by turning counterclockwise until it separates from the Filter Housing. As you remove the Lid Assembly, the Filter Cartridge will remain attached to the Lid Assembly. (fig. K)



RECOMMENDATION

Rubber gloves should be worn to avoid direct contact with filtered contaminants.

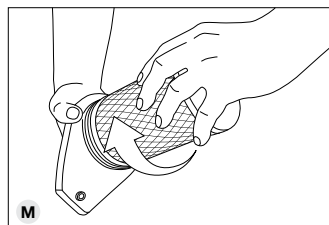
2. Hold the Lid Assembly and rotate the Filter Cartridge counterclockwise to remove. Discard the used Cartridge with your regular refuse. (fig. L)
3. Wash the inside of Filter Housing and Lid Assembly with warm water, a mild dish washing detergent and a clean cloth.



CAUTION

Do NOT use abrasive pads or other abrasive materials to clean Filtration System.

4. Remove the plastic sanitary wrap from your new Filter Cartridge. Thread the new Cartridge clockwise onto the threaded post on the Lid Assembly until you feel resistance. Make an additional quarter turn. Do NOT over-tighten. (fig. M)

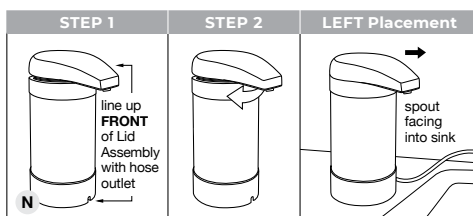


(continued on next page)

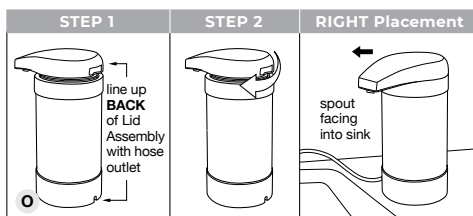
REPLACING THE FILTER CARTRIDGE

5. Determine which side of the sink you want your System:

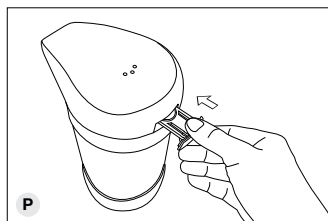
To position System to the LEFT side of your sink: Orient the Lid Assembly to Filter Housing as shown. (fig. N, Step 1) Once positioned, thread Lid Assembly clockwise onto the Filter Housing until tightened. (fig. N, Step 2)



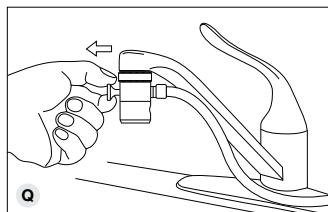
To position System to the RIGHT side of your sink: Orient the Lid Assembly to Filter Housing as shown. (fig. O, Step 1) Once positioned, thread Lid Assembly clockwise onto the Filter Housing until tightened. (fig. O, Step 2)



6. Remove the Battery Shuttle from Lid Assembly and replace your existing Battery with the NEW Battery included with your Filter Cartridge, then re-insert Battery Shuttle into Lid Assembly. (fig. P) The Intelligent Monitor™ will flash GREEN, YELLOW and RED five times. This resets the rated capacity counter to zero gallons. **Do NOT remove Battery Shuttle until it is time to replace the Filter Cartridge again. Removing Battery Shuttle prematurely may result in a loss of data.**



7. Position the System so that water will flow into kitchen sink. Turn the cold water faucet "ON" and pull the Diverter Pin. (fig. Q) Water will begin to fill the Filter Housing. Once water begins to flow from the System, the Intelligent Monitor™ will begin flashing GREEN to indicate peak operational performance.



8. Allow System to flush into sink for 15 minutes. This removes any fine, black carbon particles left over from the manufacturing process, expel trapped air and condition the Cartridge for normal use. (This water may be used to water plants.)

▲ IMPORTANT

Repeat flushing procedure each time a new Cartridge is installed.

TROUBLESHOOTING

CONDITION

White sediment is in my filtered water.

REASON

There is a presence of calcium carbonate in your main water supply. This condition will occur any time the filtered water is boiled or frozen and then melts.

SOLUTION

This condition is normal – no action is required. However, you may choose to strain the white sediment.

CONDITION

Ice cubes appear cloudy in the center.

REASON

Minerals such as calcium and magnesium that are present in your water supply collect in the center of ice cubes when the water is frozen.

SOLUTION

No action is required. Your System is specifically designed to leave beneficial trace minerals in your water.

CONDITION

The **YELLOW** Light on the Intelligent Monitor™ is flashing.

REASON

Your Filter Cartridge is reaching the end of its rated capacity and will need to be replaced soon.

SOLUTION

Purchase a new WaterChef® CR70 Filter Cartridge. For the location of the reseller nearest you, call WaterChef Customer Care at 1.800.879.8909 (int'l +1.775.359.9500). Once the RED Light begins flashing, it's time to install a new CR70 Cartridge and Battery (included).

CONDITION

Diverter Pin is sluggish or does not fully return to the "off" position after being in service for a while.

REASON #1

There could be a lack of lubricant on the shaft of the Diverter Valve.

SOLUTION #1

Remove the Diverter Valve from the kitchen faucet. Press petroleum jelly into opening on the Diverter Valve. Work the Diverter Pin in and out until a smooth motion is restored.

REASON #2

Hard water (*water with high content of dissolved minerals*) has caused a buildup in the Diverter Valve.

SOLUTION #2

Soak Diverter Valve in vinegar for several hours to remove buildup, then rinse Diverter Valve with warm water. Press petroleum jelly into opening on the Diverter Valve and work the Diverter Pin in and out until a smooth action is restored. Replace rubber washer and reconnect the Diverter Valve to the kitchen faucet.

CONDITION

Filtered water is flowing slowly from the System.

REASON

Excessive amounts of particles in the water supply may cause premature plugging of Filter Cartridge. This condition may occur before the RED Light begins to flash.

SOLUTION

Filter Cartridge must be replaced due to poor water quality conditions in your area.

NOTE: Battery *MUST* be replaced at time of Cartridge replacement. (CR70 Filter Cartridge includes a new Battery.)



COUNTERTOP WATER FILTRATION SYSTEM

LIFETIME LIMITED WARRANTY

WaterChef® warrants that for the lifetime of the original purchaser and from the date of purchase, this product will be free from defects in materials and workmanship.

WaterChef, at its option, will repair or replace this product or any component of the product found to be defective during this warranty period. Replacement will be made with a new or remanufactured product or component. If the product is no longer available, replacement may be made with a similar product of equal or greater value. This is your exclusive warranty.

This warranty is valid for the original retail purchaser from the date of original retail purchase and is not transferable. Keep the original sales receipt. Proof of purchase is required to obtain warranty service. WaterChef dealers do not have the right to alter, modify or change the terms and conditions of this warranty in any way.

This warranty does not cover normal wear of components or damage resulting from any of the following: negligent use or misuse of the product, use contrary to the Installation, Use and Care Guide, disassembly, repair or alteration by anyone other than WaterChef or an authorized service center. Further, the warranty does not cover acts of nature, such as fire, flood, tornadoes or hurricanes.

WaterChef shall not be liable for any incidental or consequential damages caused by the breach of any express or implied warranty. Except to the extent prohibited by applicable law, any implied warranty or merchantability or fitness for a particular purpose is limited in duration to the duration of the above warranty. Some states, provinces or jurisdictions do not allow the exclusion or limitation of the incidental or consequential damages or limitations on how long an implied warranty lasts, so the above limitations or exclusion may not apply to you. This warranty gives you specific legal rights, and you may also have other rights that vary from state to state or province to province.

HOW TO OBTAIN WARRANTY SERVICE

Call 1.800.879.8909 (int'l +1.775.359.9500) or email customer care@waterchef.com. If it is determined that it is necessary to return the product, a Return Authorization Number will be issued. **Products returned without a Return Authorization Number will be refused.** Pack the product in the original carton, or equivalent, using newspaper or other packing materials to protect the product from damage in transit. Before sealing the carton, be sure to include a copy of the original sales receipt along with a note describing the nature of the defect or problem. Be certain to include your return shipping address and Return Authorization Number on the outside of the carton.

Ship the product postage paid to: **WaterChef Customer Care**
3760 Barron Way
Reno, NV 89511

Upon receiving the product, we will repair or replace the product and return it to the return address on the shipping carton, postage pre-paid. (*U.S. customers only*)

WATERCHEF® PRODUCT REGISTRATION

Thank you for choosing WaterChef®! Don't forget to take a moment to register your new System. Doing so will allow us to better serve you in the event that technical or warranty assistance is ever required.

Simply visit www.waterchef.com to register your system online, or if you prefer, you may complete and return this registration form to: WaterChef Customer Care · 3760 Barron Way · Reno, NV 89511

NAME: _____
 STREET ADDRESS: _____
 CITY: _____ STATE: _____ ZIP: _____
 PHONE: (_____) _____ EMAIL: _____
 DATE OF PURCHASE: ____ / ____ / ____ MODEL #: **C7000** SERIAL #: _____
 PURCHASED FROM: _____

- Sign me up for **WaterChef Updates, Special Promotions & Exclusive Discounts!**
- Please send me **Courtesy Email Notifications** when it's time to replace my filter cartridge.

We value your privacy and will not sell or share your information with anyone. You may unsubscribe from updates and cartridge reminder notifications at any time.

NOTES



WaterChef®, Inc. | 3760 Barron Way · Reno, NV 89511 USA | **tel** 1.800.879.8909 | **int'l** +1.775.359.9500
email customer care@waterchef.com | **web** waterchef.com

Manufactured by Water Safety Corporation

1-404-0094 r23.03